

Bactrolure®



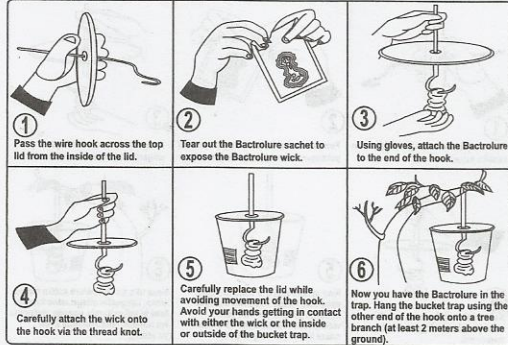
DESCRIPTION

Bactrolure contains 98.9 g/l of the active ingredient *Methyl eugenol* and 50% w/v...*Malathion*. It is a liquid para-phenylene used to attract male *Bactroera invadens* and other members of the dorsalis fruit flies complex in management of the pests. The associated Oshothion insecticide contains Malathion that kills the flies primarily through contact after landing on the impregnated lure, but also has stomach and respiratory action.

DIRECTIONS FOR USE (Use ONLY as directed.)

Assemble the bucket trap as follows;

Bactrolure comes in a set of a bucket trap that is perforated near the mouth, a wire hook and a sachet with lure. Follow the steps below;



- ⑦ When flies are full in the bucket, open the lid and empty the flies, then replace the bucket trap while attached on the tree.
- ⑧ Replace only the wick after every 8 weeks

NOTE: Bactrolure liquid is also used in male annihilation technique (MAT)

HAZARDS/PRECAUTIONS

Exposure Signs and Symptoms: Dermal Exposure may lead to some irritation of skin or eyes. Routes of entry are ingestion, inhalation, eyes, and skin contact. Related information is given under toxicology on this label. Wear rubber gloves when handling the product, wash with soap and plenty of cold water if skin is exposed

FIRST AID INSTRUCTIONS

Take affected person to a physician IMMEDIATELY in any case of suspected poisoning. Harmful if swallowed. Flush mouth with water but do NOT induce vomiting. Flush and wash contaminated skin and hair thoroughly with soap and water. Move victim of inhalation to fresh air. If irritation persists, get medical attention.

STORAGE AND DISPOSAL

Store securely under cool, dry conditions away from children, and avoid contamination of food or drinking water for people and animals. Contain accidental spill with solid absorbant, sweep/scoop up and place in container for disposal. Triple rinse empty containers, puncture and dispose of in an approved manner. Do not contaminate water supplies by disposal of wastes or containers.

TOXICOLOGICAL INFORMATION

Possible routes of methyl eugenol entry are oral (ingestion), inhalation, eyes, and skin contact. No medical conditions are known to be specifically aggravated by exposure. However, pre-existing skin or respiratory disorders may be aggravated by excessive exposure to this material. Dermal exposure may lead to irritation of skin or eyes. Potential carcinogen status is under investigation. None of the components in this product are listed by International Agency for Research on Cancer (IARC) as potential carcinogen.

NOTICE TO THE USER

This pest control product is to be used in accordance with directions on this label. It is an offence under the Pest Control Product Act to use or store a pest control product under unsafe conditions.

SELLER'S GUARANTEE

Sellers guarantee is limited to the terms set out on the and subject thereto. The buyer assumes the risk to person or property arising from the use of handling of this product and accept the product on that condition.

Agent/Distributor:

Farmtrack Consulting

Jogoo Rd Business Center, Jogoo Road
PO Box 16372- 00100, Nairobi-Kenya Tel: 020-2628630
Cell: 0711 495 522, Email: info@farmtrack.co.ke

Manufacturer:

Sentry Biologics Inc

610 Central Avenue, Billings,
Montana 59102, USA

Bactrolure®



MAELEZO

Bactrolure ina 98.8 g/l ya kiungo kuu Methyl Eugenol na 50% w/v...Malathion. Ni dawa majimaji inayotumika kuwawutia wadudu wa kieme wa *Bactroera invadens* na engine wa jamii ya dorsalis wenye utata wa usimamizi wa wadudu hao. Dawa ya Oshothion inahusiana na dawa ya Malathion inayoua wadudu kimsingi kwa kuiguza baada ya kutua kwenye kivutio kilicho wewka dawa na pia hudhuru tumbo na mfumo wa kupumua.

JINSI YA KUTUMIA

Tumia tu kama uliyvo agizwa.

Bactrolure huja kwa seti ya mtego ndoo iliopeketeke karibu na mdomo, ndoano waya na sachet lilo na vutio. Fuatilia hatua zifuatazo;



- ⑦ Wakati nzi zimejaa kamili katika ndoo, fungua kifuniko na utipilie nzi kuwzesha kupata nafasi ya mtego ndoo na kisha urudishe kwa tawi la mti,
- ⑧ Ibadilishe utambi wako baada ya kila wiki nane.

TAHADHARISHO

Mfiduo ishara na dalili: Dawa hii inaoguzwa ngozi yaweza kusababisha kuwasha kwa ngozi au macho. Njia za dawa kuingia mwilini ni kwa kumeza, kupumua, kwa macho ama inaponguzwa ngozi. Habari zaidi imepeanwa kwa kibandiko hiki. Vaa mipira kinga unaposhika bidhaa hii, na uoshe na maji mengi na sabuni iwapo itaguzwa ngozi

MAELEZO YA HUDUMA YA KWANZA

Mhadhiriwa apelekwe kwa muuguzi haraka iwezekanavyo ikwa kuna shuku la sumu. Ni hatari ikimezwa. piga mdomo na maji mengi lakini usilazimishe kutapika. Ioshe ngozi na nywele kwa maji mengi nasabuni iwapo imeguzwa dawa. Mhadhiriwa aliyevuta pumzi ya dawa anafaa kupeleka mahali penye hewa safi. Kwausha kuaendelea pata ushauri wa daktari.

KUHIFADHI

Hifadhi mahali salama pasipo joto, unyevu, mbali na watoto na uzuie isichafue chakula au maji ya kunywa ya binadamu au wanyama. Zuia dawa kumwagika, fagia /chota na uweke kwenye chombo cha utupaji. Kamua mara tatu vyombo ulizo tumia, Choma na uziondoe kwa njia iliyopitishwa. Usichafue ugavi wa maji unapoondoa vyombo au taka.

ARIFA

Njia zinazowezekana kwa Methyl Eugenol kiungia mwilini ni kwa kumeza, kupumua, kwa macho au kuguzwa kwa ngozi. Hakuna madhara yanayojulikana kuzidisha na kukabiliana na dawa hii. Lakini, matatizo ya ngozi na kupua iliyokuwa awali yaweza zidishwa na kukabiliana na dawa hii. Kuguzwa na dawa kwa ngozi kwaweza leta kuwasha kwa ngozi au macho.

Uwezekano wa kaciniojeni hadhi bado kwachunguzwa. Hakuna viungo vyovyote kwenye hii dawa zimeorodheshwa na International Agency for Research on Cancer (IARC) kuwa na uwezekano wa kaciniojeni.

ILANI NA KWA MUTUMIAJI

Dawa hii sharti itumievi kulingana na maagizo yaliyo kwenye kibandiko. Ni hatia chini ya sheria ya madawa kuangamiza madawa waharibifu kutumia au kuhifadhi dawa hii katika hali isiyu salama.

THIBITISHO

Dhamana ya muuzaji ni maelezo yaliyo kwenye kibandiko ambayo ni lazima yafuatwe kikamilifu. Mnuuzi lazima akubali hatari zozote zinazoweza kutokana na utumizi wa dawa hii kwa binadamu hau mali na ni lazima akubali dawa hii katika hali hiyo.

Agent/Distributor:

Farmtrack Consulting

Jogoo Rd Business Center, Jogoo Road
PO. Box 16372- 00100, Nairobi-Kenya Tel: 020-2628630
Cell: 0711 495 522, Email: info@farmtrack.co.ke

Manufacturer:

Sentry Biologics Inc

610 Central Avenue, Billings,
Montana 59102, USA